

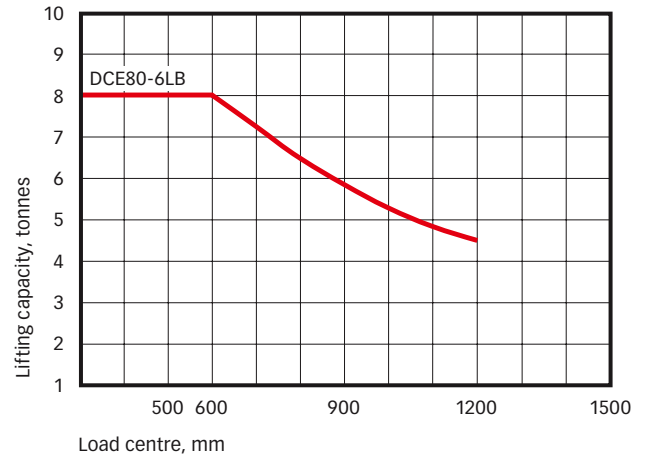
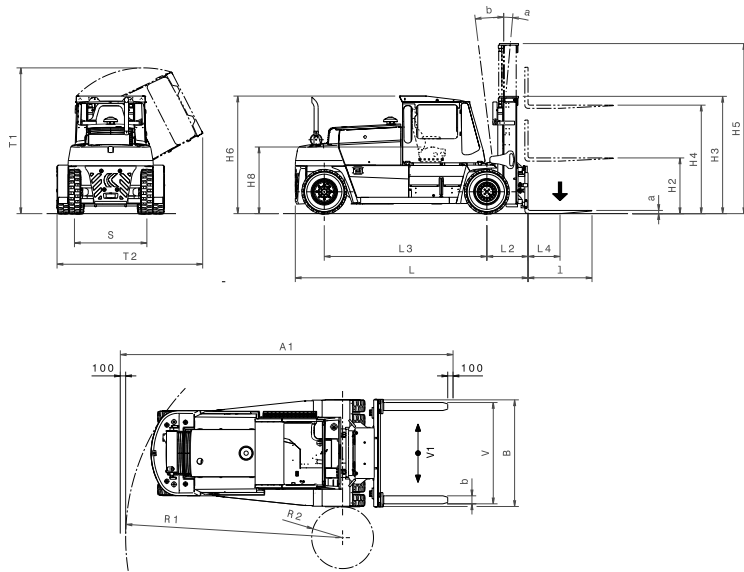
Light Lift Trucks

Technical data, Kalmar DCE80-6LB

Perkins – 1106D-E66TA | Duplex clear view, freelif – LH 2035 mm

DCE80-6LB

Lifting data		
Lifting capacity, rated	kg	8000
Lifting speed, unloaded – at 70% of rated load	m/s	0,40 – 0,35
Lowering speed, unloaded – at rated load	m/s	0,43 – 0,47
Driving data		
Travelling speed forward, unloaded – at rated load	km/h	23 – 22
Travelling speed backward, unloaded – at rated load	km/h	23 – 22
Gradeability max., unloaded – at rated load	%	73 – 34
Gradeability at 2 km/h, unloaded – at rated load	%	64 – 30
Drawbar pull, max.	kN	58
Stability according to EN 1726		
Weight of truck		
Service weight	kg	9800
Axle load front, unloaded – at rated load	kg	5100 – 16700
Axle load rear, unloaded – at rated load	kg	4700 – 1100
Engine		
Manufacturer – type designation		Perkins – 1106D-E66TA
Fuel – type of engine		Diesel – 4 stroke
Number of cylinders – displacement	cm ³	6 – 6600
Power according to ISO 3046 – at revs	kW – rpm	89 – 2200
Torque according to ISO 3046 – at revs	Nm – rpm	545 – 1400
Alternator, type – power	W	AC – 2100
Starting battery, voltage – capacity	V-Ah	24 – 75
Fuel consumption, normal driving	l/h	6-8
Transmission		
Manufacturer – type designation		ZF 2WG-94
Clutch, type		Torque converter
Gearbox, type		Powershift
Number of gears, forward – reverse		2 – 2
Driving axle, type		Differential and hub reduction
Wheels		
Type		Pneumatic
Dimension, front – rear	inch	8,25×15 – 8,25×15
Number of wheels, front – rear (* driven)		4* – 2
Pressure	MPa	0,85
Steering system, type – manoeuvring		Hydraulic servo – Steering wheel
Service brake system, type – affected wheels		Wet disc brakes – Drive wheel
Parking brake system, type – affected wheels		Spring brake – Drive wheel
Miscellaneous		
Maximum hydraulic pressure	MPa	19,5
Noise level according to DIN 45635 part 36, inside Spirit Delta	dB(A)	72
Noise level according to DIN 2000/14/EC, outside	dB(A)	105
Hydraulic oil volume	l	155
Fuel volume	l	155



1. Full lifting capacity up to full lifting height with duplex/duplex free lift/triplex mast and fork carriage with side shift/fork positioning.

DCE80-6LB

Dimensions

Length of truck, including forks	L	mm	4365
Width of truck	B	mm	2000
Height of basic machine, LB-cabin	H6	mm	2200
Height of seat, SIP	H8	mm	1250
Distance between centre of front axle – front face of fork arm	L2	mm	770
Wheelbase	L3	mm	3050
Load centre	L4	mm	600
Track (c-c), front – rear	S	mm	1500 – 1360
Turning radius, outer – inner	R1 – R2	mm	4070 – 580
Ground clearance, min.		mm	160
Max. height when tilting cabin, LB-cabin	T1	mm	2735
Max. width when tilting cabin, LB-cabin	T2	mm	2730
Min. aisle for 90° stacking with forks	A1	mm	6240
Lifting height	H4	mm	2035
Mast height, min.	H3	mm	2200
Mast height, max.	H5	mm	3190
Tilting of lifting mast, forward – backward	α – β	°	5 – 7
Fork width	b	mm	150
Fork thickness	a	mm	60
Length of forkarm	l	mm	1200
Width across fork arms, max – min	V	mm	1900 – 420
Sideshift \pm at width of across fork arms	V1 – V	mm	375 – 1160

We reserve the right to change the design and technical data without prior notice. 2008.05.22
Tolerances according to K-standard 95430.0008/0009

Kalmar Industries AB

SE-341 81 Ljungby, Sweden

tel. +46 372 260 00, fax. +46 372 263 90